



KETTLE MORAINE YMCA DAY CAMP

2024

THINK OUTSIDE

No box required




**REGISTER EARLY
AND SAVE!**

kmymca.org/daycamp

THE MORE YOU KNOW!


- › REGISTRATION BEGINS February 8th | Page 12
- › Members receive a discounted rate | Page 12
- › State Funding Accepted | Page 13

- › Camp Locations | Page 3
- › Summer School Wrap Around Camp | Page 8
- › Convenient Locations throughout Washington and Ozaukee Counties



Camp Begins
June 10

Camp Ends
August 30



PARENT QUESTION SESSIONS

March 8
from 5:30–7:30 pm
Feith Family Ozaukee Branch

March 16
from 10 am–12 pm
West Washington Branch

WELCOME 2024 TO YMCA DAY CAMP!

The recipe for a wonderful childhood includes adventure, learning, safety, friends, and fun! The Kettle Moraine YMCA uses these components to design our annual camp program. It will help your children grow as individuals by nurturing their sense of belonging as they meet new people and develop lifelong friendships. We are constantly adding more opportunities for campers to exercise their math and reading skills along with implementing our Social Emotional Learning curriculum.

Our staff aims to create an exciting adventurous atmosphere, so all our campers have the best summer ever! Before your child arrives at camp, our team receives an extensive 40 hours of training in behavioral guidance, CPR, AED, First Aid, and much more.

Our camps' engaging activities will draw your child in, but the relationships built are why they will want to return year after year. We look forward to making new memories with your camper this summer!

At YMCA Day Camp, we think outside, no box required!



WANT TO KNOW MORE?
SEE VIDEO!

Sincerely,

Sofia Zarenana
Day Camp Director
📍 West Washington Branch
✉ daycampww@kmymca.org
☎ 262-247-1056

Ben Breuer
Day Camp Director
📍 Feith Family Ozaukee Branch
✉ daycampff@kmymca.org
☎ 262-235-9617

PARENT ORIENTATION

OZAUKEE COUNTY

April 27
from 1–3 pm
Feith Family Ozaukee Branch

WASHINGTON COUNTY

April 27
from 1–3 pm
West Washington Branch

May 15
from 6–8pm
John Long Middle School

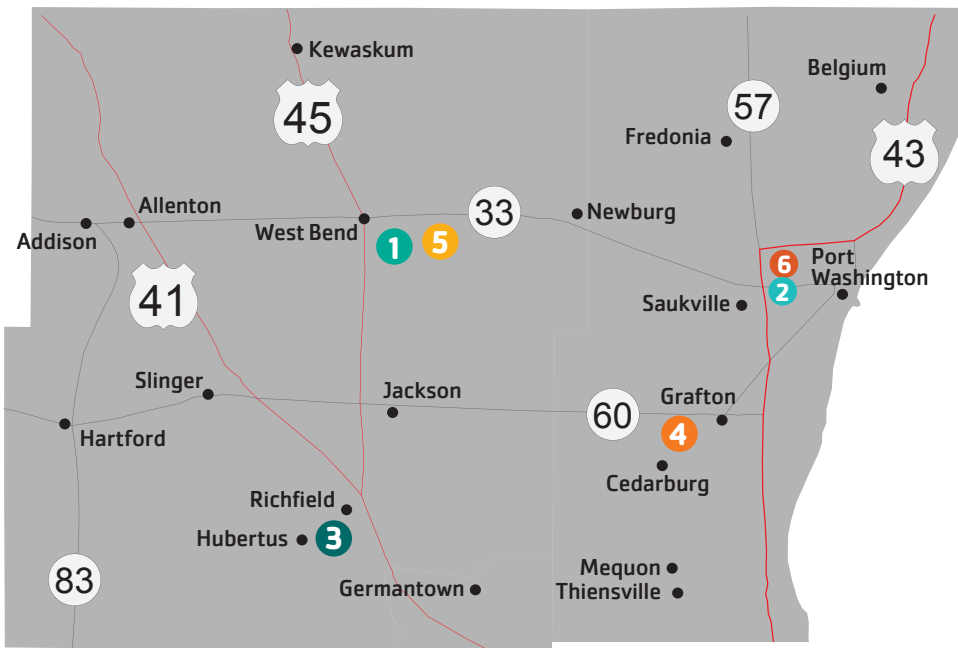
May 15
from 6–8pm
Silverbrook Intermediate School



Table of Contents

PAGE 2 Welcome to Camp!	PAGE 3 Camp Locations	PAGE 4 Sample Schedule	PAGE 5 Camp Options
PAGE 6-7 At-A-Glance (Program Overview)	PAGE 8 Summer School Wrap Around Camp	PAGE 9 Specialty Camp Descriptions	PAGE 10 Jr. Specialty Camp Descriptions
PAGE 11 CIT & Mini Explorers	PAGE 12 Day Camp Pricing	PAGE 13 Payment/Registration Policies and Procedures	PAGE 14-15 Payment/Registration Policies and Procedures

CAMP LOCATIONS



1 Silverbrook YMCA Day Camp
Silverbrook Intermediate School
120 North Silverbrook Dr., West Bend, WI

Ages 5-12, must have completed Kindergarten

2 Feith Family YMCA Day Camp
Feith Family Ozaukee Branch
465 Northwoods Rd., Port Washington, WI

Ages 5-12, must have completed Kindergarten

3 Holy Hill Area School District YMCA Day Camp
Friess Lake Elementary School
1750 WIS-164, Hubertus, WI

Ages 4-12

4 Grafton YMCA Day Camp
John Long Middle School
700 Hickory St., Grafton, WI

Ages 5-12

5 Mini Explorers
West Washington Branch
1111 W. Washington St., West Bend, WI

For campers entering Kindergarten in the Fall. See page 11 for details.

6 Mini Explorers
Feith Family Ozaukee Branch
465 Northwoods Rd., Port Washington, WI

For campers entering Kindergarten in the Fall. See page 11 for details.

WHAT TO BRING TO CAMP EACH DAY

Please add your child's name to everything they bring to camp. Your counselor will inform you if any other supplies will be needed through a Sunday night email. Also, please send your camper in clothing that is okay for getting dirty.



- Backpack
- Non-perishable Bagged Lunch
- Sunscreen
- Bug Spray
- Reusable Water Bottle
- Book
- Swimsuit
- Towel
- Weather Appropriate Apparel *Including Closed-toed Shoes*

WHAT TO LEAVE HOME

All electronics, cell phones, watches with texting or calling abilities, and toys (stuffed animals, Pokemon cards, LEGOs, etc.). The Y is not responsible for lost or broken items.

SAMPLE DAY SCHEDULE

Field trips and swim days are dependent on the camper's age and which location they attend.



FIELD TRIP DAYS:

TUESDAYS

- Silverbrook Navigators & Adventurers
- Feith Family Navigators & Adventurers
- Grafton Navigators & Adventurers (NEW!)
- Holy Hill Area School District YMCA Day Camp (NEW!)

THURSDAYS

- Silverbrook Explorers & Voyagers
- Feith Family Explorers & Voyagers
- Grafton Explorers & Voyagers (NEW!)

6:00–8:45 am

Drop Off!

8:45–9:30 am

Opening Ceremonies and Snack

9:30 am–3:30 pm

MAIN CAMP DAY
Activities could include:
 Swimming
 Skill Activities
 Counselor Planned Activities
 All Camp Games
 Unit Activities
 Field Trips

3:30–4:00 pm

Closing Ceremonies and Snack

4:00–6:00 pm

Pick Up!
 See You Tomorrow!

Learn more about Wrap Around Camp on page 8.

CAMP STRUCTURE

Silverbrook, Feith, and Grafton YMCA Day Camps are separated into units by camp selection and age. Please keep in mind that these are tentative ranges.

AGE RANGES CAN VARY FROM WEEK TO WEEK, DEPENDING ON ENROLLMENT. THE AGE RANGES LISTED BELOW ARE TENTATIVE.

SPECIALTY & SPORTS CAMPS

Sports Camp Adventurers: Ages 6–10
 Specialty Camp Adventurers: Ages 8–12
 (Ages dependent on camp selection)

TRADITIONAL & JR. SPECIALTY CAMPS

Explorers: Ages 5–6
 Voyagers: Ages 6–8
 Navigators: Ages 8–12



CAMP OPTIONS

TRADITIONAL AGES 5–12*

*Ages 4–12 at Holy Hill Area School District YMCA Day Camp Only.
*Silverbrook and Feith Campers must have completed Kindergarten.
See pages 6 and 7 for dates and locations.
See page 11 for options specifically designed for children entering Kindergarten in the Fall.

Our Traditional YMCA Day Camp is perfect for the child who wants to experience a little bit of everything! Each week is packed with various activities centered around physical movement, social interaction, educational opportunities, leadership building, and personal growth. Campers will also enjoy weekly field trips and swim times. They will be divided into small groups by age, with activities appropriate to the interests and needs of each group.

SPECIALTY AGES 8–12

Full-week (5-day) registration ONLY.
See pages 6 and 7 for dates and locations and page 9 for weekly descriptions.

Does your child have a specific interest or hobby? Our specialty camps offer campers three hours a day, four days a week, focusing on the topics they are most interested in. Don't worry; that fifth day is spent joining traditional camp on their field trip.



Registering for Summer School?

See Page 8 for Summer School Wrap Around Camp!

JR. SPECIALTY AGES 5–7

Full-week (5-day) registration ONLY.
See pages 6 and 7 for dates and locations and page 10 for weekly descriptions.

Jr. Specialty Camps are geared for younger campers so they can experience fun and learn creative activities and skills with their peers. Campers spend at least three hours per day, four days a week, focusing on their specific camp theme or skill. On the 5th day, campers will participate in the weekly field trip.

SPORTS AGES 6–10

Full-week (5-day) registration ONLY. See pages 6 and 7 for dates and locations.

Y Sports Camp is the perfect option for a child who enjoys playing sports and being active. Sports Camp provides a fun and supportive environment for athletes of all skill levels. Outside of the specific sports activities, campers will go swimming, take a weekly field trip, and participate in sports-related crafts and character development activities. Sports campers will be divided into small groups by age, with activities appropriate to the interests and needs of each group.

CIT (Counselors In Training) AGES 12–16

See pages 6 and 7 for dates and locations.
See page 11 for more information.

Our Counselors In Training (CIT) program focuses on developing strong leaders through training, discussion, observation, and supervised child interaction. This program is for teens serious about learning to work with children, improve their leadership skills, and they must have completed 6th grade to be eligible for the CIT program. All teens are required to complete an application, submit two letters of recommendation, and participate in an interview process to help develop job skills before being accepted into the program.

REGISTER EARLY FOR A REDUCED RATE!
See page 12 for details!

YMCA DAY CAMP

Camp Type	Week 1 June 10–14	Week 2 June 17–21	Week 3 June 24–28	Week 4 July 1–5 (No camp July 4)	Week 5 July 8–12
-----------	----------------------	----------------------	----------------------	--	---------------------

Camp Type	Week 1 June 10–14	Week 2 June 17–21	Week 3 June 24–28	Week 4 July 1–5 (No camp July 4)	Week 5 July 8–12	
FEITH YMCA DAY CAMP	Traditional* (Ages 5–12)	Kick Off to Summer!	Destination Dinosaur	Camp Spirit	Red, White, and Blue	Ooey Goey
	Jr Specialty* (Ages 5–7)	Outdoor Feast	Down on the Farm	Cartoon Creations		Splashin' in the Sun
	Specialty (Ages 8–12)	Invention Convention	Trail Trekkers	All About Art	Camp Challenge	Wild About Science
	Sports (Ages 6–10)	All About Sports	Soccer	Basketball	Sports Challenge	Baseball
	CIT (Completed 6th grade or older)		Intro to CIT	Fostering Collaboration	Acting with Integrity	Volunteerism
GRAFTON YMCA DAY CAMP	Traditional (Ages 5–12)	Kick Off to Summer!	Destination Dinosaur	Camp Spirit	Red, White, and Blue	Ooey Goey
	Jr Specialty (Ages 5–7)	Down on the Farm	Outdoor Feast	Little Einsteins		Splashin' in the Sun
	Specialty (Ages 8–12)	Galactic Adventure			Camp Challenge	
	Sports (Ages 6–10)	All About Sports			Pickleball	
	CIT (Completed 6th grade or older)		Intro to CIT	Fostering Collaboration	Acting with Integrity	Volunteerism
SILVERBROOK YMCA DAY CAMP	Traditional* (Ages 5–12)	Kick Off to Summer!	Destination Dinosaur	Camp Spirit	Red, White, and Blue	Ooey Goey
	Jr Specialty* (Ages 5–7)	Cartoon Creations	Down on the Farm	Princes, Princesses, and Dragons		Splashin' in the Sun
	Specialty (Ages 8–12)	Invention Convention	Trail Trekkers	All About Art	Make a Splash	Wild About Science
	Sports (Ages 6–10)	All About Sports	Soccer	Basketball	Sports Challenge	Baseball
	CIT (Completed 6th grade or older)		Intro to CIT	Fostering Collaboration	Acting with Integrity	Volunteerism
HOLY HILL YMCA DAY CAMP	Traditional (Ages 4–12)	Kick Off to Summer	Destination Dinosaur	Camp Spirit	Red, White, and Blue	Ooey Goey
	Specialty (Ages 8–12)					Bowling
	CIT (Completed 6th grade or older)		Intro to CIT	Fostering Collaboration	Acting with Integrity	Volunteerism

AT-A-GLANCE



Week 6
July 15–19

Week 7
July 22–26

Week 8
July 29–Aug 2

Week 9
Aug 5–9

Week 10
Aug 12–16

Week 11
Aug 19–23

Week 12
Aug 26–30

Thank You Counselors!	Holidaze	Passport to Fun	Carnival Week	Comics and Superheroes	Beach Bash	Buggin' Out
All About Animals	Mystery Detectives	Little Einsteins	Princes, Princesses, and Dragons	Crafty Crafters	Can You Build It?	
Make A Splash	Lemonade Stand	Galactic Adventure	Archery	Backyard Games	Scrapbooking	Bowling
Pickleball	Summer Olympics	Flag Football	Volleyball	Soccer	Kickball, Dodgeball, and Beyond	
Community Relationships	Character & Reputation	Self-Reliance & Continuous Learning	Citizenship	Digital Responsibility	Compassion: People First	
Thank You Counselors!	Holidaze	Passport to Fun	Carnival Week	Comics and Superheroes	Beach Bash	Buggin' Out
All About Animals	Mystery Detectives	Cartoon Creations	Princes, Princesses, and Dragons	Can You Build It?	Crafty Crafters	
			Make A Splash	Scrapbooking	Bowling	All About Art
			Baseball	Kickball Dodgeball and Beyond	Flag Football	
Community Relationships	Character & Reputation	Self-Reliance & Continuous Learning	Citizenship	Digital Responsibility	Compassion: People First	
Thank You Counselors!	Holidaze	Passport to Fun	Carnival Week	Comics and Superheroes	Beach Bash	Buggin' Out
Nature Nurtures	Little Einsteins	Can You Build It?	Mystery Detectives	Crafty Crafters	Mini Chefs	
Lemonade Stand	Hook, Line, and Sinker	Galactic Adventure	Scrapbooking	Bake Sale	Bowling	Backyard Games
Pickleball	Sports Around the World	Basketball	Summer Olympics	Flag Football	Kickball, Dodgeball, and Beyond	
Community Relationships	Character & Reputation	Self-Reliance & Continuous Learning	Citizenship	Digital Responsibility	Compassion: People First	
Thank You Counselors!	Holidaze	Passport to Fun	Carnival Week	Comics and Superheroes	Beach Bash	Buggin' Out
Lemonade Stand			Trail Trekkers			
Community Relationships	Character & Reputation	Self-Reliance & Continuous Learning	Citizenship	Digital Responsibility	Compassion: People First	



SUMMER SCHOOL WRAP AROUND CAMP



Are you seeking care before or after your child's summer school day? We have you covered! YMCA Summer School

Wrap Around Camp offers a convenient option for families who want their child/children to attend summer school. After your child's classes conclude, your child will eat lunch and participate in activities, including games, songs, team building, swimming (varies by site), and other camp fun!

Remember to send a backpack with a lunch, reusable water bottle, swimsuit, towel, and closed-toed shoes! Campers who attend this program do not attend the weekly camp field trip.

Families that register their child for Summer School Wrap Around Camp should not register their child for any additional Day Camp program options during those weeks. For state assistance, PWSSD and NOSD location numbers differ from Camp location numbers, see page 13.

DISCLAIMER:



Campers who sign up for Summer School Wrap Around Camp must attend all hours of summer school. The YMCA Day Camp program does not provide early pick-up or late drop-off.

****Please note that there is a minimum of 2-day registration.**

SCHOOL DISTRICT Site Location	DAILY CAMP RATES**	GRADES (Based on 2024/2025 School Year)	DAYS AVAILABLE*	CAMP WEEKS TAKING PLACE	TIMES	TRANSPORTATION
Northern Ozaukee School District Northern Ozaukee Elementary School	\$28	5K–8th	Mon–Fri (Except week 4 Mon–Wed)	Weeks 1–4: June 10–July 3 (No Wrap Around Camp July 4th & 5th)	12:15–6 pm	On-Site
Grafton School District John Long Middle School	AM – \$10 PM – \$28	5K–7th	Mon–Thurs*	Weeks 2–3,5–8: Session A: June 17–27 Session B: July 8–18 Session C: July 22– August 1	6–8 am 12–6 pm	On-Site
Port Washington/Saukville School District Lincoln Elementary School	PM – \$28	1st–7th	Mon–Thurs*	Weeks 2,3,5–8: Session 1: June 17–July 11 Session 2: July 15–August 1 (No Wrap Around Camp July 1–5)	11:30 am–6 pm	On-Site Mon–Thurs Full Day Friday will take place at Feith Family YMCA
Cedarburg School District John Long Middle School (Located in Grafton)	\$28	5K–7th	Mon–Thurs*	Weeks 2,3,5,6: Session 1: June 17–27, Session 2: July 8–18	11:45 am–6 pm	Bussing is included directly from school to Y Day Camp.
West Bend School District Silverbrook Intermediate School	AM – \$10 PM – \$28	1st–6th	Mon–Thurs*	Weeks 2–5: June 17–July 11 (No Wrap Around Camp July 4th)	6–8 am 11 am–6 pm	On-Site for Silverbrook students. Bussing for others.
Holy Hill Area School District Friess Lake Elementary School	AM – \$10 PM – \$28	4K (must be at least 4 years old)–6th	Mon–Thurs*	Weeks 1–3: June 10–27	6–8 am 12–6 pm	On-Site

* Friday Full Day Add-on for an additional \$45 each week. Care is available 6 am–6 pm.



SPECIALTY CAMP DESCRIPTIONS

Ages 8-12



All About Art | Calling all creative campers! Get your hands dirty with awesome crafts and explore different mediums, including watercolors, colored pencils, tempera paint, and much more! Campers will also participate in traditional camp activities like organized games, crafts, and songs.

Archery | Practice shooting techniques on compound and re-curve bows during archery camp! In addition to daily shooting practice, instructors will cover other topics, such as range safety and equipment operation.

Backyard Games | Are get-together games your favorite part of summer? From ladder ball to corn hole, we will learn all the fun games to bring to your next backyard party! Get your game face on for a fun week of unique sports for all ages!

Bake Sale | Campers will make the world a better place by hosting a bake sale. All proceeds go towards the YMCA Scholarship Fund. The beginning of each day will be spent creating delicious delights that will be sold to parents and families during the week.

Bowling | Do you love bowling? Then, this camp is right up your alley. Let the good times roll in the lanes four times a week while learning different bowling techniques to turn your spare into a strike.

Camp Challenge | Campers will be contestants and compete in one-of-a-kind challenges, ready to risk it all and be the best. Do you think you have what it takes to make it to the end, win the grand prize, and become the ultimate champion?

Galactic Adventure | Do you have an interest in lunar learning? Blast off into this fun and activity-filled session learning about the solar system. Campers will let their imaginations soar while learning about the planets, stars, and the moon.

Hook, Line, and Sinker | Fishing is more fun with friends! Learn all you need to know to be a safe and self-sufficient fishing master. Campers will take two trips to local fishing areas and test their net skills on the critters in Silver Creek.

Invention Convention | Campers will have the chance to show off their creativity and ingenuity. They will create their own products and advertise them as they become young entrepreneurs. The week will culminate with campers presenting their creations to our panel of director judges.

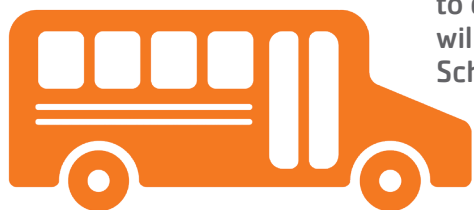
Lemonade Stand | Fresh-squeezed summer fun is provided right at your neighborhood camp as campers create a lemonade stand from start to finish! They will create a business plan, promotions, and products to sell to campers and families. All profits will be donated to the YMCA Scholarship Fund.

Make A Splash | Spend time swimming, playing water games, throwing water balloons, and so much more! This fun camp will keep your little fish busy and wet!

Scrapbooking | Campers will create different memories throughout the week. By the end of the week, the campers will have made their own personal scrapbook of memories from summer camp!

Trail Trekkers | Hike deep into the woods through nearby trails to explore what makes our forests unique for people and wildlife. We will create unique trail mix recipes, learn map reading skills, compass use, and more as we learn about the fantastic local forest.

Wild About Science | Campers will explore various science concepts such as chemical reactions, physics, and many more through hands-on experiments, creative projects, and STEM challenges.



All About Animals | Each animal is as exciting and unique as your camper. From lions, tigers, and bears (Oh my!), your camper will use their imagination to transport themselves to a seemingly different world!

Can You Build It? | Put on your hard hat and enjoy the world of architecture as you build your designs and conquer engineering challenges using teamwork, problem-solving, and brain power.

Cartoon Creations | This camp aims to explore the campers' creative side, focusing on many of their favorite cartoon characters. Each camper will also create their own personal cartoon character. Many camps will be themed around cartoon characters.

Crafty Crafters | There are no boundaries to your imagination as you create art and find your style using different mediums, techniques, and tools you may have never experienced.

Down on the Farm | Ever wonder what life would be like on a farm? Campers will experience seeing different farm animals and maybe even milk a cow!

Little Einsteins | Let your little scientist explore and experiment in this camp. Campers will have tons of fun mixing up potions and experimenting with different scientific reactions.

JR. SPECIALTY CAMP DESCRIPTIONS

Ages
5-7



Mini Chefs | Campers will create dishes that are sure to get their taste buds singing. This week, campers will learn basic cooking skills, safety, and healthy eating choices. We will finish the week with a cookbook to take home. Join us as we learn to cook and prepare delicious desserts, scrumptious snacks, and tasty treats.

Mystery Detectives | Aspiring spy recruits will develop a disguise for cover, make and break codes, discover escape and evasion techniques, and create and use spy gadgets.

Nature Nurturers | Campers will find themselves at eye level with insects, following in the footsteps of the creatures that call the outdoors their home and discovering what interesting art we can make from natural materials.

Outdoor Feasts | Yum yum yum! Step outside for some outdoor cooking fun! Campers will create tasty treats—all without a kitchen. Put on your chef's hat and join us for a week of culinary delight in the sun!

Princes, Princesses, and Dragons | Campers let their imaginations soar in this magical fairy tale-themed arts and crafts camp! Participants make dragon and fairy wings, prince and princess crowns, wands, jewels, fairy tale puppets, costumes, and more! Campers will also learn about fortresses and moats by creating their castles.

Splashin' in the Sun | Does your camper enjoy the water and being outside? Well, this is the camp for you. The campers will do water activities and might even have a dance party as if they were on the beach! From water activities to beach dance parties, your camper can enjoy many water-themed activities during this week.



See page 8 for Summer School Wrap Around Camp.

*Feith and Silverbrook Day Camp must have completed Kindergarten.



To register and fill out the application for the CIT, please visit: www.kmymca.org/daycamp



Applications are due by May 1, 2024



COUNSELORS IN TRAINING (CIT)

AGES 12-16
(Must have completed 6th grade)

CIT LEVELS

Level 1 Intro to CIT June 17-21 | \$100

This one-week required program consists of training sessions with a Camp Director and counselor shadowing throughout the week. These sessions will teach CITs about role modeling, CIT expectations, and camp operations. Upon completion of Level 1, CITs may sign up for Level 2 programs for the remainder of the summer. All CIT participants must complete Level 1 if new to the program.

Level 2* | \$25/week

Teens must successfully complete Level 1 to participate in the Level 2 CIT programs. In these programs, CITs will be focusing on specific skills each week. Some examples of these skills include coaching, personal growth, and volunteerism.

**These programs are offered weekly beginning June 24.*

If you have any questions, email Sofia Zarenana or Ben Breuer:

Sofia Zarenana

Day Camp Director

📍 West Washington Branch
✉ daycampww@kmymca.org
☎ 262-247-1056

Ben Breuer

Day Camp Director

📍 Feith Family Ozaukee Branch
✉ daycampff@kmymca.org
☎ 262-235-9617

MINI EXPLORERS

Must be 4 years old as of 9/1/23 through entering Kindergarten.



*Space is limited!
Contact us today for registration information AND to reserve your spot!*

This camp provides a smaller setting for our youngest campers. Our staff creates a positive and caring learning environment where children can make new friends, achieve new successes, and have their first camp experience. The program includes many camp traditions, such as camp circle, theme days, and more.

Daily activities are designed to meet your youngster's social, emotional, and physical needs, including arts, science, literacy, games, and outdoor play. Activities provide hands-on fun, while children have the opportunity to be active and learn new skills while reinforcing lessons learned throughout the year.



Mini Explorer campers must be enrolled in full-time programming to be eligible for a sibling discount.

- **REGISTRATION for this program is unavailable through our website, but you can contact us at the email noted below:**
- **WASHINGTON COUNTY**
- For more information, please contact: wwminiexplorers@kmymca.org
- **OZAUKEE COUNTY**
- For more information, please contact ffminiexplorers@kmymca.org

Our two locations we offer Mini Explorers:



Kettle Moraine YMCA
1111 W. Washington St.
West Bend, WI



Feith Family YMCA
465 Northwoods Rd.
Saukville, WI

Q & A

Frequently Asked Questions

How is my deposit applied?

Your deposit will be applied to the weekly draft. Keep in mind that the deposits are non-refundable. To calculate your weekly fees, subtract \$20 (the deposit).

What do I do if I need to make a schedule change?

Once a registration is submitted, it is subject to our schedule change policies (page 13). If canceling full weeks of camp, the deposit is forfeited. If reducing days within one week, you may reduce two weeks for free; all others will result in a \$20 fee per week. Adding days/weeks is dependent on availability. All changes are due two weeks in advance of the draft date, from the Monday of the week in question, and are subject to the pricing of the current tier.

Can I sign up my camper for partial weeks of Sports or Specialty camps?

Sports and Specialty are full-week-only options.

Are there partial-day options?

We offer Summer School Wrap Camp (page 8) for those registered for summer school. Outside of this, there are no other partial-day options.

What is the pricing for Counselors In Training?

Counselor in Training must go through an application and interview process and be accepted into the program. Please see page 11 for details, including pricing.

DAY CAMP PRICING

Traditional, Sports, and Specialty Camps.

The pricing below is per week.

See page 13 for schedule change and cancelation policies.



\$20 NON-REFUNDABLE DEPOSIT PER CAMP WEEK for each camper being registered is due at the time of registration.

A SIBLING DISCOUNT OF 10% WILL BE HONORED FOR FAMILIES WITH TWO OR MORE CHILDREN ENROLLED IN THIS PROGRAM. Typically, the discount applies to the oldest child/children. Mini Explorer campers must be enrolled full-time FOR OLDER SIBLINGS to be eligible for a discount.



**Due to significantly different ratio requirements, 4-year-olds attending our Holy Hill Area School District YMCA Day Camp will be charged an additional \$20 per week.*

MEMBER PRICING*

Registration Completed By:	Camp Type	5 days	4 days	3 days
Tier 1 Thursday, February 8– Sunday, March 10	Traditional	\$190	\$175	\$145
	Sports or Specialty	\$205	N/A	N/A
Tier 2 Monday, March 11– Sunday, May 5	Traditional	\$205	\$185	\$155
	Sports or Specialty	\$220	N/A	N/A
Tier 3 Monday, May 6– End of Camp	Traditional	\$220	\$195	\$165
	Sports or Specialty	\$235	N/A	N/A

The camper **MUST** be a member at the time of registration through the last week of camp.

COMMUNITY PARTICIPANT (NON-MEMBER) PRICING*

Registration Completed By:	Camp Type	5 days	4 days	3 days
Tier 1 Thursday, February 8– Sunday, March 10	Traditional	\$200	\$185	\$155
	Sports or Specialty	\$215	N/A	N/A
Tier 2 Monday, March 11– Sunday, May 5	Traditional	\$215	\$195	\$165
	Sports or Specialty	\$230	N/A	N/A
Tier 3 Monday, May 6– End of Camp	Traditional	\$230	\$205	\$175
	Sports or Specialty	\$245	N/A	N/A

PAYMENT AND REGISTRATION INFORMATION

WEEKLY AUTO PAYMENTS

Payments for camp will be processed via a weekly auto draft. On the registration form, you will be asked to provide credit/debit card or bank account information which will be automatically charged each week. The charge is made on the Monday of the camp week. A \$10 late fee will be applied to all payments received after the due date. All fees are non-refundable.

NON-REFUNDABLE DEPOSIT

A non-refundable \$20 deposit is due for each week of camp at the time of registration. For example, if a camper is registered for 12 weeks at initial registration, a deposit of \$240 will be taken. This deposit will be applied to the child's weekly draft. The full deposit amount will be drafted from the bank or credit/debit card that you provide within your registration form.

CANCELATIONS

- All cancellations must be submitted at least two weeks prior to the draft date. **Cancellations submitted less than two weeks prior to the draft date will not receive any refund or credit.**
- For each week that is canceled, the \$20 deposit will be forfeited.
- This includes cancellations made prior to the start of camp and during camp.
- To submit cancellation requests, please complete our "Change Form" which can be found by visiting www.kmymca.org/daycamp.

SCHEDULE CHANGES

- All changes must be submitted at least two weeks in advance. **Changes submitted less than two weeks prior to the draft date will not receive any refund or credit.**
- Each camper is allowed two schedule changes, which can be used for:
 - Changing days of camp within one camp week.
 - Transferring from Sports or Specialty Camp to Traditional Camp within one camp week.
- A \$20 fee per camper will be charged for each additional week that is either reduced, transferred, or changed.
- All changes are subject to the pricing tier at the time when the change is submitted unless the amount of days stays the same within the week. *(This includes changes made prior to the start of camp and during camp).*
- To submit change requests, please complete our "Change Form" which can be found by visiting www.kmymca.org/daycamp.

SPLIT PAYMENTS

If a family needs to split payments between two parties, both parties will need to supply banking information. Please email the YMCA Day Camp office. We cannot split deposit payments.

DISCOUNTS

A sibling discount of 10% will be honored for families with two or more children enrolled in this program or full-time child care. Mini Explorer campers must be full-time for older siblings to be eligible for a discount.

NON-SUFFICIENT FUNDS (NSF) POLICY

Should any payment draft not be honored by your financial institution for any reason, you will be charged a \$25 NSF fee. Campers with an outstanding balance will not be allowed to attend camp until the balance is paid. In addition, if a camper has an outstanding camp balance, they will be ineligible to register for any other Y programs until *the balance is paid*.

PAYMENT/REGISTRATION POLICIES AND PROCEDURES

FINANCIAL ASSISTANCE

WISCONSIN SHARES

Wisconsin Shares is a Child Care Subsidy Program that authorizes funding for a parent to pay a portion of camp fees by using their MyWICChildcare EBT card. On the 1st of each month, funds will be loaded onto the MyWICChildCare EBT card and must be processed by the parent for payment to the YMCA by the 5th of the month, after which the YMCA Day Camp office will be able to inform the parent of the remaining balance owed for that month. The remaining parent share will be divided into three equal installments, which will be bank drafted on the 2nd, 3rd, and 4th Mondays of the month. Childcare authorizations must be in place and current before the camper can attend camp. Visit www.dcf.wisconsin.gov/wishares/apply for more information or call 1-888-446-1239.

Provider Number: 9000559219

Camp Location Number

Silverbrook YMCA Day Camp - 021
Feith Family Ozaukee YMCA Day Camp - 020
Grafton YMCA Day Camp - 036
Holy Hill Area School District YMCA Day Camp - 035

Wrap Around Location Number

PWSSD - 025
NOSD - 016

Camp FIS Number

Silverbrook YMCA Day Camp - E267249
Feith Family Ozaukee YMCA Day Camp - E267234
Grafton YMCA Day Camp - E282793
Holy Hill Area School District YMCA Day Camp - E320667

Please contact Rita Williams at rwilliams@kmymca.org or 262-429-2069 with questions.

ANNUAL CAMPAIGN SCHOLARSHIP

The Y has a financial assistance program that awards a percentage off of YMCA Day Camp to qualifying families based on income. To qualify for a scholarship, families must first apply for Wisconsin Shares. Please note that childcare/day camp scholarships are different than membership scholarships. Please contact Rita Williams at rwilliams@kmymca.org or 262-429-2069 with questions.

CAMPERS WITH ADDITIONAL NEEDS

We work hard to include everyone we can at camp because of the great things it can do for all. However, some parents like to know about limitations and other things that may not make it the right fit. Our structure can encourage loud voices, so it gets noisy sometimes. We keep everyone busy, which means lots of transitions! If a parent is unsure, please reach out, as we are happy to discuss our camp structure, a typical day, counselor-to-camper ratios, and your child's needs to see if our camp is a good fit. We cannot accommodate 1-on-1 needs, physicality towards staff or other campers, running out of range of supervision, or causing any safety concerns. If these types of behaviors occur, the Y reserves the right to end enrollment.

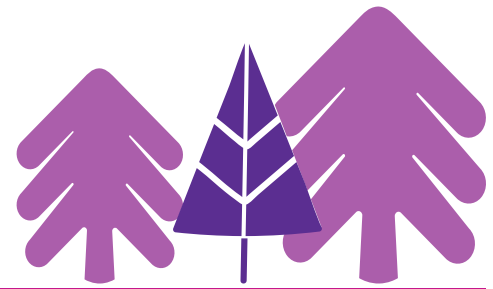
DAY CAMP OFFICE CONTACT INFORMATION

 **WASHINGTON COUNTY**
daycampww@kmymca.org

 **OZAUKEE COUNTY**
daycampff@kmymca.org

To Register visit: www.kmymca.org

CAMP REGISTRATION INFORMATION



Visit www.kmymca.org/daycamp to register online!

SILVERBROOK YMCA DAY CAMP



Silverbrook YMCA Day
West Washington

REMEMBER to only select ONE option for each week!



Review pricing on page 12. Campers **MUST** be members prior to registering to receive member pricing. If they are not, and you'd like to sign them up for a membership, be sure to reach out to the Welcome Desk to do so before registering for our YMCA Day Camp!

1. Go to www.kmymca.org/daycamp to review the information and our YMCA Day Camp Brochure.
2. When you are ready to register, click "Register Online" in the upper-right corner of the webpage.
3. Go to our program registration page, and find the **YMCA Day Camp location** where you would like to register your camper at.
4. Once selected, begin looking through and selecting what camp types and weeks you would like to register your camper for. You may want to register for a few different options, be sure to start with one. Once you have the weeks selected for that one option, select "**Register Selected.**"
5. It will now ask you to log in (unless you are already logged into our site for other program registrations. If this is the case, you can skip these steps as it will not ask you to log in). Please note the question at the top of the page: "Which best describes you?"

a. If you know your camper's membership/participant email and password, log in. Use the login information you have used to register for YMCA classes or Kids Day Out during the 2023-2024 school year (this would be the same credentials as registering for camp last year or for Before and After School programs).

b. If you do not know the login information for your camper's profile, or your attempt in the previous step fails, click the "I don't know my credentials" option. It will ask you to enter information and verify the email that we have on file.

i. Once you get into the system, it may ask you to select a membership type if you do not have a membership. If you are not interested in signing up for a membership, please select the "non-member" option, and proceed.

c. If your camper has never enrolled in any of the Kettle Moraine YMCA programs or classes and has never been a member, you can select "I have never been a member or participant and I want to create a new account."

i. Enter the required information for your camper, and select a membership type. If you are not interested in registering for a membership, please select the "non-member" option.

Open	Close	Register At
11/24/21	3/31/22	Online / Front Desk
4/1/22	4/30/22	Online / Front Desk
5/1/22	8/14/22	Online / Front Desk

Available Sessions

- Date(s)
- 06/06/22 - 06/10/22 Specialty 1: Jedi Training
- 06/06/22 - 06/10/22 Specialty Camp 2: Art-Ragec
- 06/13/22 - 06/17/22 Bowling

TIPS FOR REGISTRATION



- Look through the options in the brochure and pick everything out ahead of time with your camper.
- These instructions are per child. However, you can register for multiple children at the same time.
- If you want to do different options throughout the summer, make a note of what you select while you are in the process of registering to prevent selecting multiple camps in the same week.
- **ONLY REGISTER FOR ONE OPTION EVERY WEEK! If you register for more than one camp, you will be paying double for that week!**
- Pay attention to age requirements for each camp type!
- Think of it like you are shopping on Amazon! Add the camps you want to your cart, and check out when you've selected.
- If you have any questions, call the welcome desk/membership department. They are experts in our online registration system.
- Get excited!

d. If you have any concerns or questions at any point of this process, please call one of the Kettle Moraine YMCA branches (West Washington 262-334-3405 or Feith Family 262-268-9622), and select the option for the WELCOME DESK, NOT the option for School Age and Day Camp.

6. Once you are logged in, proceed with registration! Continue selecting the weeks and camp options your camper would like to attend.
- a. Please be aware that your camper can only attend **ONE OPTION/CAMP TYPE EACH WEEK**.
- b. You can register your camper for one option or multiple options throughout the summer, just not in the same week.

i. To do this, if registering for multiple camp types throughout the summer (1 per week!), please make a note of which weeks you select within a particular option and select "register selected."

*If registering for Traditional Camp, select days of the week for the selected weeks. If your camper will have the same schedule for all Traditional Camp weeks, you can select the days, and it will autofill them in for every week. If your camper has a varying schedule, select "USE CALENDAR" to pick which days they will be attending throughout the summer in Traditional Camp. If you notice that a particular week is saying it is full, remove it from your cart and try again for that week only using the calendar option to see which days are full.

ii. It will then have you answer all of our required questions and sign our consent forms.

iii. On the next page, review and select "Add to Cart."

iv. Return to the program page and repeat step 6 to add in weeks from a different camp option to your cart if applicable.

1. Note that to avoid reentering your answers, select "use previous answers" to bring the questions back up.

v. Go to your cart and **REVIEW**. Make sure there are **NO** overlapping dates.

vi. Once you have all of the weeks you would like in your cart, checkout and complete the billing information.

vii. After completing registration, you will receive a confirmation email.

Item	Fee (Inactive Member)	Min. Due Today	Due Later	Due By
06/06/2022 - 06/10/2022 (Specialty Camp 2: Art-Rageous)				06/06/22
06/13/2022 - 06/17/2022 (Fishing)				06/13/22
Total				

Payment

Payment Amount: \$ (Due Today) | First Name: | Last Name: | Credit Card Number: |
Total Due Later: \$ | Billing Address: |
 Schedule future payments | City: | State: WI | Card Expiration: MM/YYYY | CVV: |
Payment Method: Credit Card | Save this payment method for future use |
Zip: |

I have made sure the information above is correct



KETTLE MORAINÉ YMCA | www.kmymca.org

WEST WASHINGTON BRANCH

1111 W. Washington St.
West Bend, WI 53095
262-334-3405

FEITH FAMILY OZAUKEE BRANCH

465 Northwoods Rd.
Port Washington, WI 53074
262-268-9622

NON-PROFIT
ORGANIZATION
US POSTAGE PAID
WEST BEND, WI
PERMIT NO. 116

Registration for YMCA Day Camp begins Thursday, February 8th!
REGISTER EARLY AND SAVE! (See page 12)

SPRING FEVER AT THE Y

March 8 • Feith Family Branch 5:30-7:30 pm
MARCH 16 • West Washington Branch 10 am-12 pm

Join us for family fun that is **FREE** for everyone!
Activities, games, open swim, and so much more!

**SAVE
THE
DATE!**

RECREATIONAL SWIM TIME

All children will have the opportunity to swim. Each pool is staffed by YMCA lifeguards, a waterfront supervisor, and our counselors in the water.

Please connect with your YMCA Day Camp Director to learn more about how we keep campers safe while swimming.

Children using the Family Adventure Pool who are 8 or older and are tall enough to touch the bottom of the pool do not need to take the swim test.

SILVERBROOK YMCA DAY CAMP

Safety Around Water classes are provided for the explorer units Friday mornings for no additional fee.



FEITH FAMILY YMCA DAY CAMP

Safety Around Water classes are provided for the explorer units on Tuesday for no additional fee.

FIELD TRIPS

YMCA Day Camp sites go on a weekly field trip and are divided into two days based on either age or location. Parents should pack their lunch in a zip lock bag prior to arriving at camp to prevent lunches from leaking or getting wet in coolers. Campers should arrive by 8:45 am on field trip days in their field trip shirt and dress in appropriate clothing and footwear for the weekly field trip location.

Some examples of field trips include; State/County/City Parks, County Zoo, Bowling, and Museums. Check back in May for the posted Field Trip schedule at www.kmymca.org/daycamp.



We will take campers weekly to a local park. Campers will be able to play on the playground, go for nature walks, play group games in the fields, participate in STEM activities, and so much more!

This will provide a space for campers to connect with nature while having fun, making new friends, and trying new activities! Park Days are just one more enhancement that will give our campers a great summer camp experience.



PARK DAY

For Washington County Camps Only.